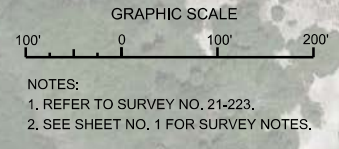
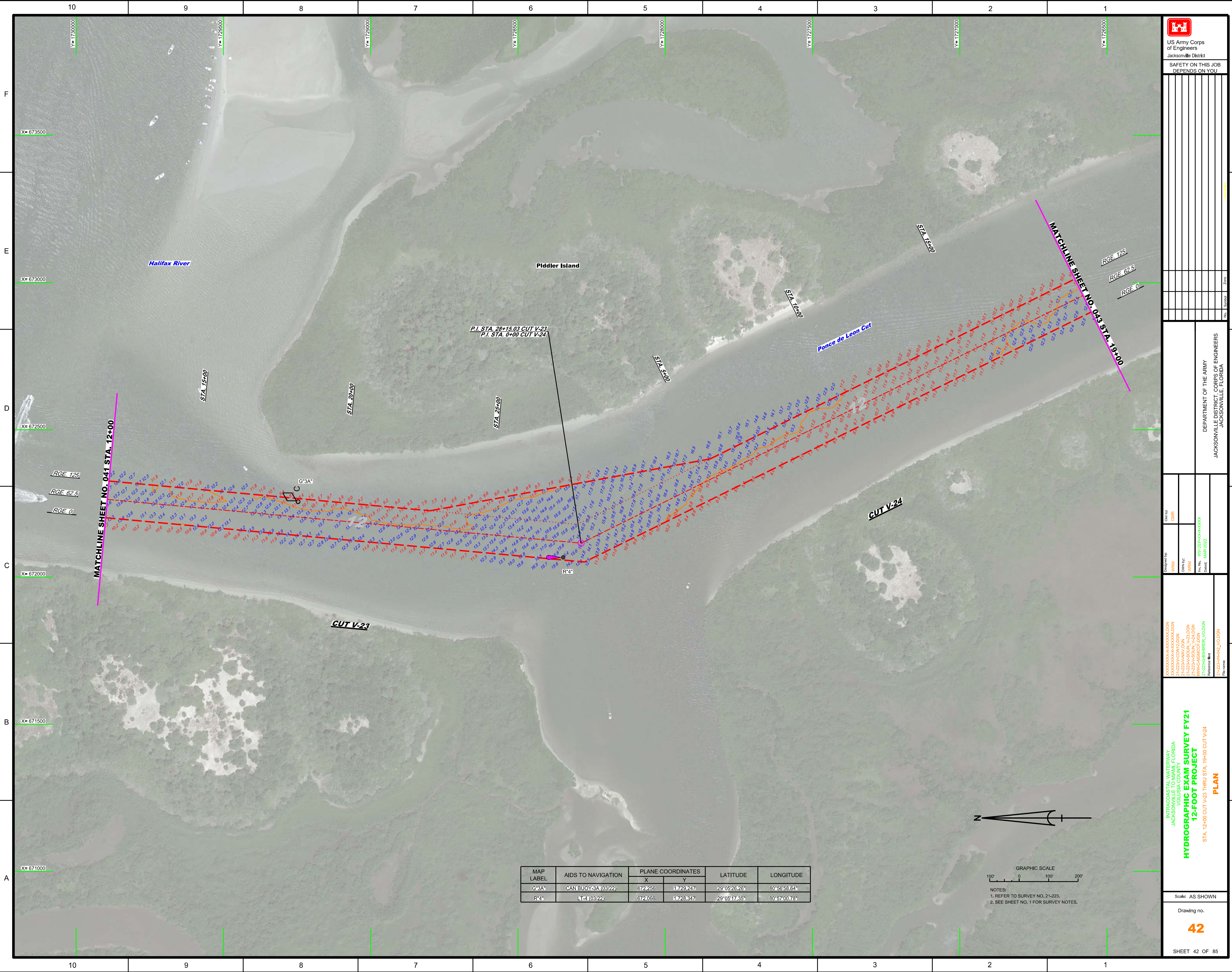



MAP LABEL	AIDS TO NAVIGATION	PLANE COORDINATES		LATITUDE	LONGITUDE
		X	Y		
G*1	1-1 (03/22)	672,406	1,731,264	29°05'46.23"	80°56'56.94"
R*2*	NUN BUOY#2 (03/22)	672,372	1,730,502	29°05'38.68"	80°56'57.32"
R*2A*	NUN BUOY#2A (03/22)	672,197	1,729,978	29°05'33.49"	80°56'59.30"
G*3*	CAN BUOY#3 (03/22)	672,512	1,730,520	29°05'38.86"	80°56'55.74"
R*72*	DBN#72 (03/22)	671,937	1,732,179	29°05'55.29"	80°57'02.22"





  
 US Army Corps of Engineers  
 Jacksonville District  
 SAFETY ON THIS JOB  
 DEPENDS ON YOU

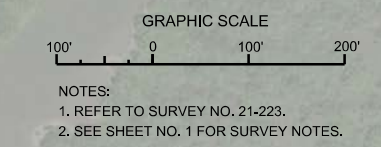
DEPARTMENT OF THE ARMY  
 JACKSONVILLE DISTRICT, CORPS OF ENGINEERS  
 JACKSONVILLE, FLORIDA


Call by: GHR  
 Designed by: WRM  
 Drawn by: WRM  
 File No: W12235-00-00-000  
 Date: MAR 2022

INTRACOASTAL WATERWAY  
 JACKSONVILLE TO MIAMI, FLORIDA  
 VOLusia COUNTY  
**HYDROGRAPHIC EXAM SURVEY FY21**  
**12-FOOT PROJECT**  
 STA. 12+00 CUT V-23 THRU STA. 19+00 CUT V-24  
**PLAN**

Scale: AS SHOWN  
 Drawing no.  
**42**  
 SHEET 42 OF 85

MAP LABEL	AIDS TO NAVIGATION	PLANE COORDINATES		LATITUDE	LONGITUDE
		X	Y		
G-3A	CAN BUOY-3A (03/22)	672256	1728247	29°05'26.26"	80°56'58.64"
R-4	LT-1 (03/22)	672066	1728347	29°05'17.35"	80°57'00.78"



 US Army Corps of Engineers  
Jacksonville District  
SAFETY ON THIS JOB DEPENDS ON YOU



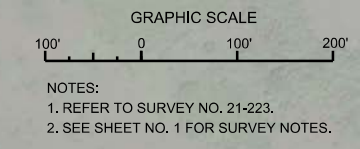

DEPARTMENT OF THE ARMY  
JACKSONVILLE DISTRICT, CORPS OF ENGINEERS  
JACKSONVILLE, FLORIDA

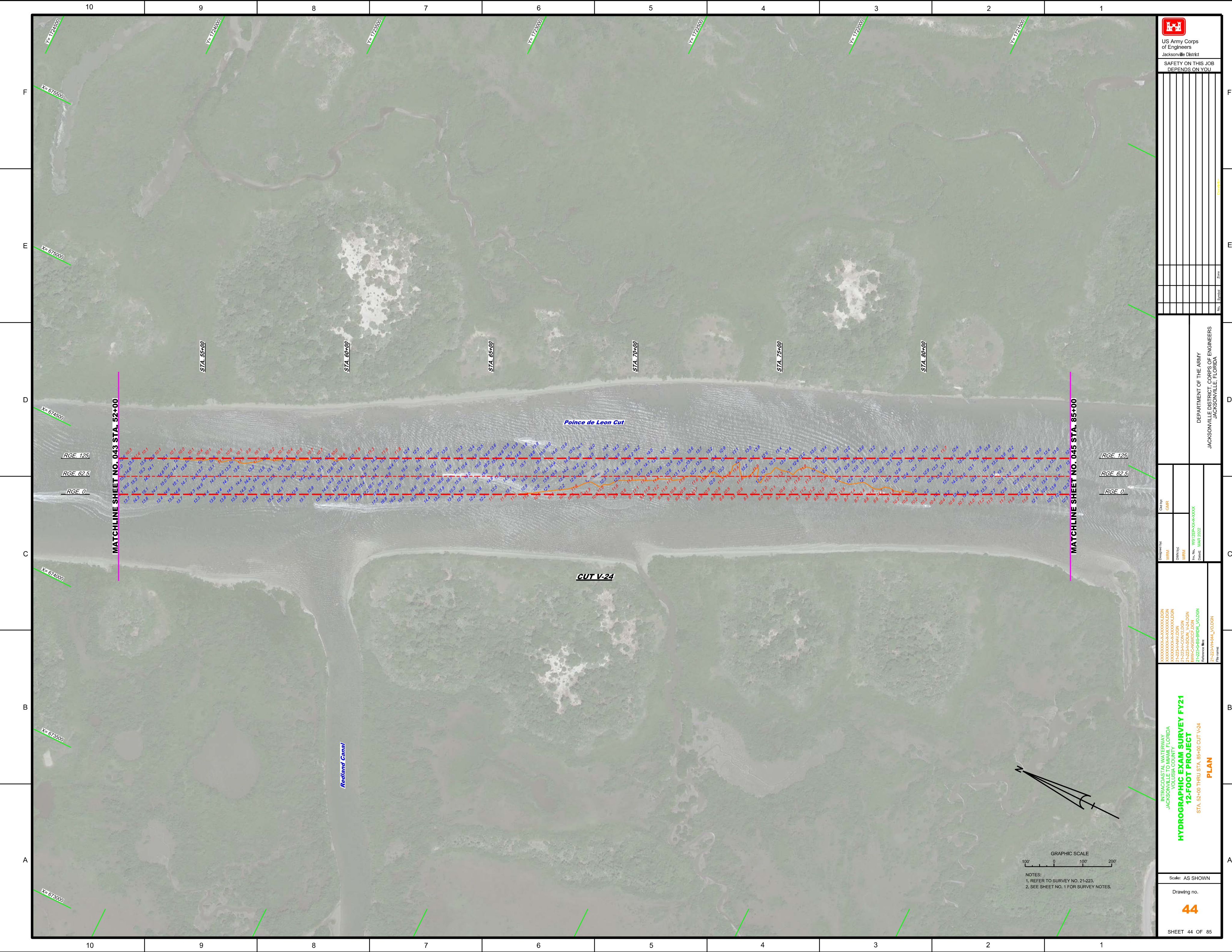
Checked by: GHR  
Designed by: WRM  
Drawn by: WRM  
File No.: W912PFA-00-000000000000  
Date: MAR 2022

XXXXXXXXXXXXXXXXXXXXX.DGN  
XXXXXXXXXXXXXXXXXXXXX.DGN  
XXXXXXXXXXXXXXXXXXXXX.DGN  
XXXXXXXXXXXXXXXXXXXXX.DGN  
XXXXXXXXXXXXXXXXXXXXX.DGN  
XXXXXXXXXXXXXXXXXXXXX.DGN  
XXXXXXXXXXXXXXXXXXXXX.DGN  
XXXXXXXXXXXXXXXXXXXXX.DGN  
XXXXXXXXXXXXXXXXXXXXX.DGN  
XXXXXXXXXXXXXXXXXXXXX.DGN  
XXXXXXXXXXXXXXXXXXXXX.DGN  
XXXXXXXXXXXXXXXXXXXXX.DGN

**INTRACOASTAL WATERWAY  
JACKSONVILLE TO MIAMI, FLORIDA  
VOLusia COUNTY  
12-FOOT PROJECT  
STA. 19+00 THRU STA. 52+00 CUT V-24  
PLAN**

MAP LABEL	AIDS TO NAVIGATION	PLANE COORDINATES		LATITUDE	LONGITUDE
		X	Y		
G-7*	DBN-7 (10/21)	674.379	1,723,858	29°04'32.89"	80°56'34.73"





US Army Corps of Engineers  
Jacksonville District

**SAFETY ON THIS JOB DEPENDS ON YOU**

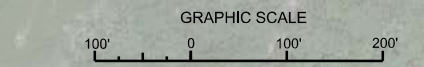

DEPARTMENT OF THE ARMY  
JACKSONVILLE DISTRICT, CORPS OF ENGINEERS  
JACKSONVILLE, FLORIDA

Checked By: GHR  
Designed By: WRM  
Drawn By: WRM  
File No.: W912P25A-A50-00-00-00  
Date: MAR 2022

XXXXXXXXXXXXXXXXXXXX.DGN  
XXXXXXXXXXXXXXXXXXXX.DGN  
XXXXXXXXXXXXXXXXXXXX.DGN  
XXXXXXXXXXXXXXXXXXXX.DGN  
XXXXXXXXXXXXXXXXXXXX.DGN  
XXXXXXXXXXXXXXXXXXXX.DGN  
XXXXXXXXXXXXXXXXXXXX.DGN

INTRACOASTAL WATERWAY  
JACKSONVILLE TO MIAMI, FLORIDA  
VOLUSIA COUNTY  
**HYDROGRAPHIC EXAM SURVEY FY21**  
**12-FOOT PROJECT**  
STA. 52+00 THRU STA. 85+00 CUT V-24  
**PLAN**

Scale: AS SHOWN  
Drawing no.  
**44**  
SHEET 44 OF 85



NOTES:  
1. REFER TO SURVEY NO. 21-223.  
2. SEE SHEET NO. 1 FOR SURVEY NOTES.

US Army Corps of Engineers  
 Jacksonville District  
 SAFETY ON THIS JOB  
 DEPENDS ON YOU

Checked By: GHR  
 Designed By: WRM  
 Drawn By: WRM  
 File No.: W91225-34-V0033  
 Date: MAR 2022

XXXXXXXXXXXXXXXXXXXX.DGN  
 F:\2223AA\N\000.DGN  
 F:\2223AA\SOUL\_V04.DGN  
 F:\2223AA\SOUL\_V05.DGN  
 W91225-34-V0033.DGN  
 F:\2223-34-34-SROR\_V03.DGN  
 F:\2223-34-34-SROR\_V03.DGN  
 F:\2223-34-34-SROR\_V03.DGN

DEPARTMENT OF THE ARMY  
 JACKSONVILLE DISTRICT, CORPS OF ENGINEERS  
 JACKSONVILLE, FLORIDA

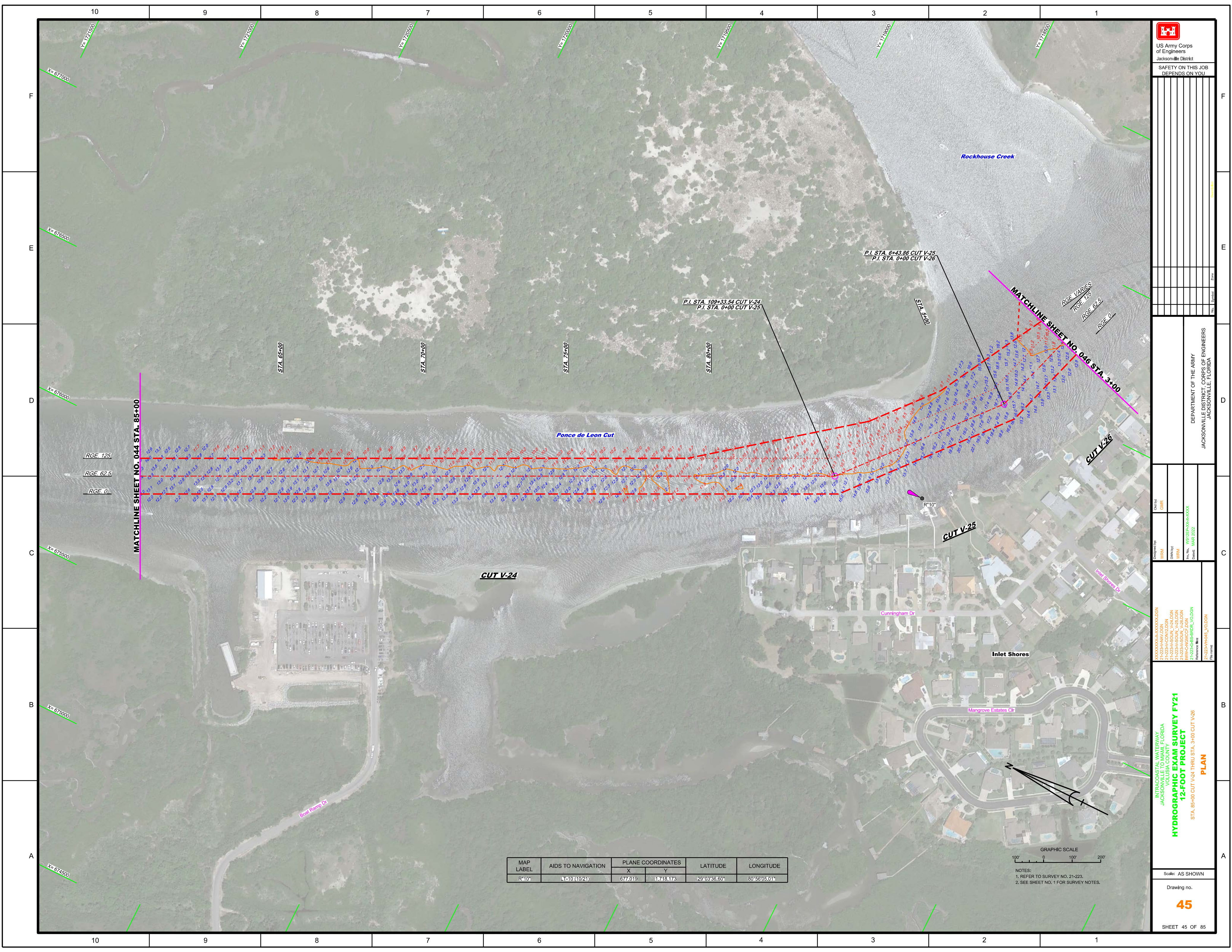
MAP LABEL	AIDS TO NAVIGATION	PLANE COORDINATES		LATITUDE	LONGITUDE
R 10'	L 10 (10/21)	677,019	1718,173	29°03'35.60"	80°56'05.01"

INTRACOASTAL WATERWAY  
 JACKSONVILLE TO MIAMI, FLORIDA  
 VOLusia COUNTY  
**HYDROGRAPHIC EXAM SURVEY FY21  
 12-FOOT PROJECT**  
 STA. 85+00 CUT V-24 THRU STA. 3+00 CUT V-26  
**PLAN**

Scale: AS SHOWN

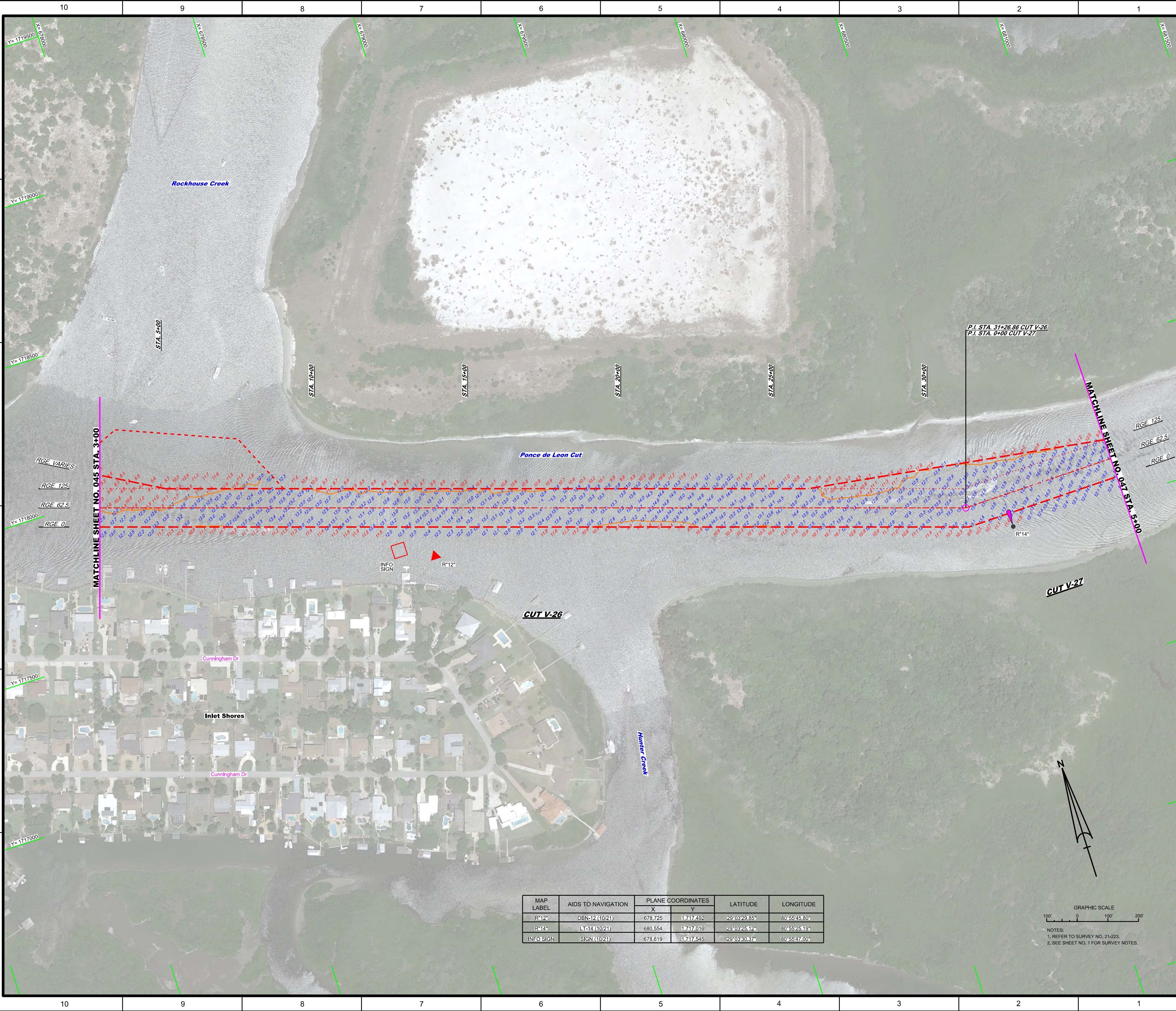
Drawing no.  
**45**

SHEET 45 OF 85

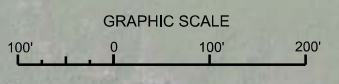


GRAPHIC SCALE  
 100' 0 100' 200'

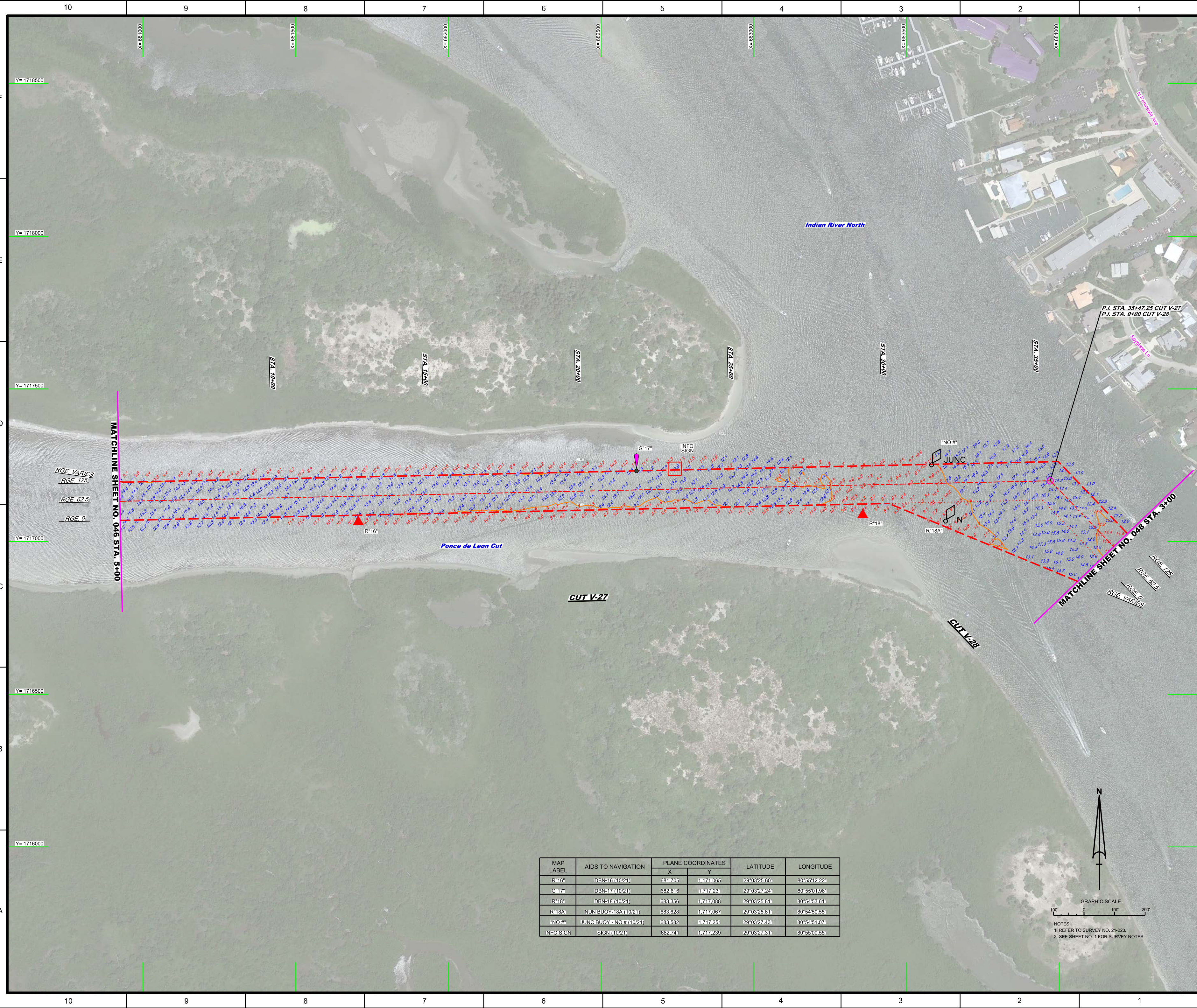
NOTES:  
 1. REFER TO SURVEY NO. 21-223.  
 2. SEE SHEET NO. 1 FOR SURVEY NOTES.



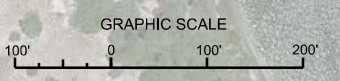
MAP LABEL	AIDS TO NAVIGATION	PLANE COORDINATES		LATITUDE	LONGITUDE
		X	Y		
R*12	DBN-12 (10/21)	678.725	1717.492	29°03'29.85"	80°55'45.80"
R*14	LT-14 (10/21)	680.554	1717.016	29°03'25.12"	80°55'25.19"
INFO SIGN	SIGN (10/21)	678.619	1717.545	29°03'30.87"	80°55'47.00"



NOTES:  
1. REFER TO SURVEY NO. 21-223.  
2. SEE SHEET NO. 1 FOR SURVEY NOTES.



MAP LABEL	AIDS TO NAVIGATION	PLANE COORDINATES		LATITUDE	LONGITUDE
		X	Y		
R*16	DBN-16 (10/21)	681705	17171065	29°03'25.60"	80°55'12.22"
G*17	DBN-17 (10/21)	682616	17171231	29°03'27.24"	80°55'01.96"
R*18	DBN-18 (10/21)	683356	17171088	29°03'25.81"	80°54'53.61"
R*18A	NUN BUOY-18A (10/21)	683628	17171067	29°03'25.61"	80°54'50.55"
*NO #	JUNC BUOY-No # (10/21)	683582	17171251	29°03'27.43"	80°54'51.07"
INFO SIGN	SIGN (10/21)	682741	17171239	29°03'27.31"	80°55'00.55"



NOTES:  
1. REFER TO SURVEY NO. 21-223.  
2. SEE SHEET NO. 1 FOR SURVEY NOTES.

MATCHLINE SHEET NO. 046 STA. 5+00

MATCHLINE SHEET NO. 048 STA. 3+00

RGE VARIES  
RGE 125  
RGE 62.5  
RGE 0

RGE 125  
RGE 62.5  
RGE 0  
RGE VARIES

Indian River North

Ponca de Leon Cut

CUT V-27

CUT V-28

STA. 0+00

STA. 15+00

STA. 20+00

STA. 25+00

STA. 30+00

STA. 35+00

STA. 3+00

G\*17

INFO SIGN

\*NO #

JUNC

R\*16

R\*18

R\*18A

Y=1718500

Y=1718000

Y=1717500

Y=1717000

Y=1716500

Y=1716000

X=681000

X=681500

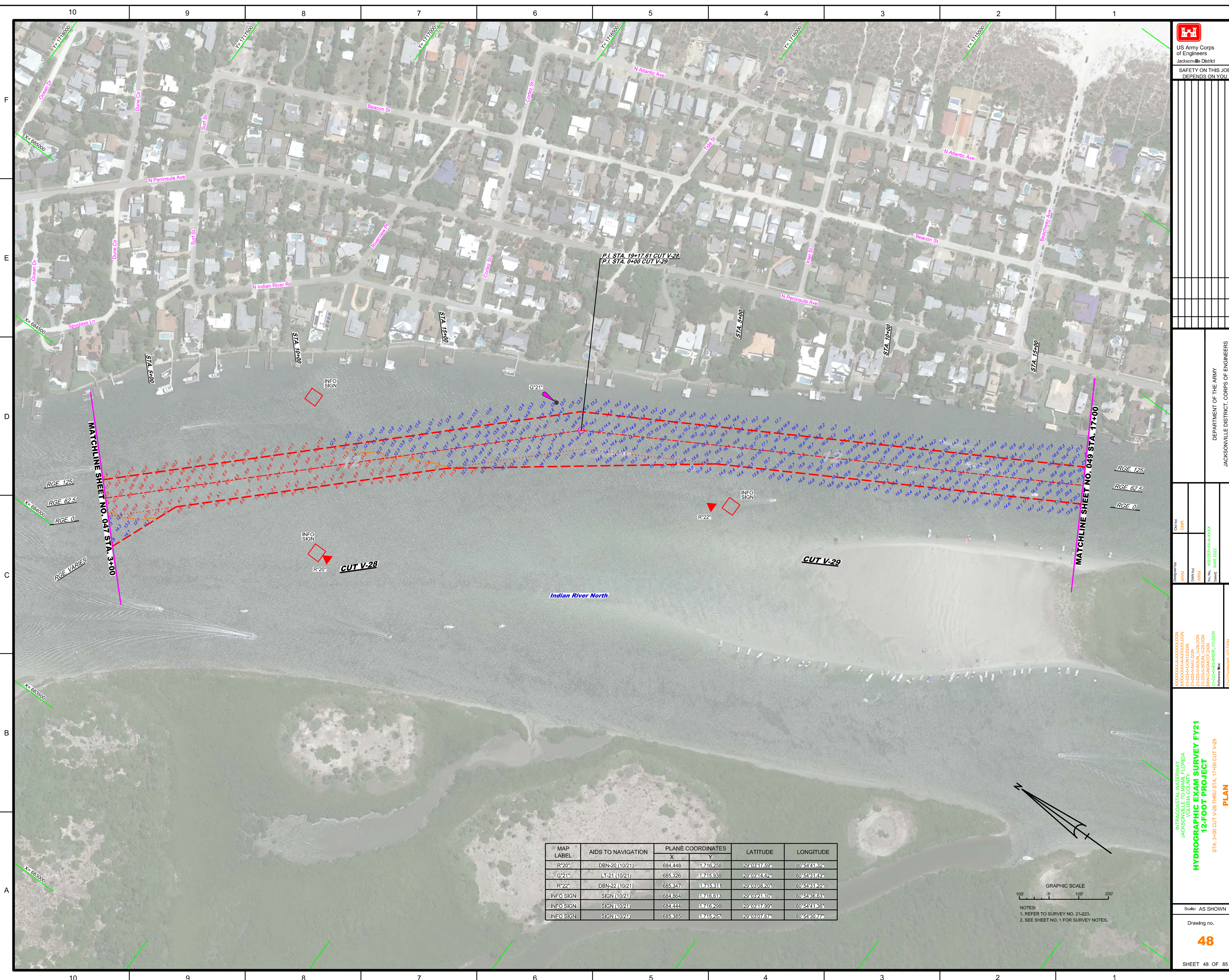
X=682000

X=682500

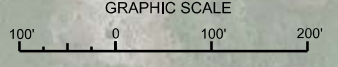
X=683000

X=683500

X=684000



MAP LABEL	AIDS TO NAVIGATION	PLANE COORDINATES		LATITUDE	LONGITUDE
		X	Y		
R*20*	DBN-20 (10/21)	684,448	1,716,258	29°03'17.59"	80°54'41.32"
G*21*	LT-21 (10/21)	685,326	1,715,938	29°03'14.42"	80°54'31.43"
R*22*	DBN-22 (10/21)	685,347	1,715,311	29°03'03.20"	80°54'31.20"
INFO SIGN	SIGN (10/21)	684,864	1,716,613	29°03'21.10"	80°54'36.63"
INFO SIGN	SIGN (10/21)	684,444	1,716,298	29°03'17.99"	80°54'41.36"
INFO SIGN	SIGN (10/21)	685,385	1,715,257	29°03'07.67"	80°54'30.77"



NOTES:  
 1. REFER TO SURVEY NO. 21-223.  
 2. SEE SHEET NO. 1 FOR SURVEY NOTES.

US Army Corps of Engineers  
 Jacksonville District  
**SAFETY ON THIS JOB DEPENDS ON YOU**

---

DEPARTMENT OF THE ARMY  
 JACKSONVILLE DISTRICT, CORPS OF ENGINEERS  
 JACKSONVILLE, FLORIDA

---

**INTRACOASTAL WATERWAY**  
 JACKSONVILLE TO MIAMI, FLORIDA  
 VOLusia COUNTY  
**HYDROGRAPHIC EXAM SURVEY FY21**  
**12-FOOT PROJECT**  
 STA. 3+00 CUT V-28 THRU STA. 17+00 CUT V-29  
**PLAN**

---

Scale: AS SHOWN  
 Drawing no. **48**  
 SHEET 48 OF 85



DEPARTMENT OF THE ARMY  
JACKSONVILLE DISTRICT, CORPS OF ENGINEERS  
JACKSONVILLE, FLORIDA

Checked By: GHR  
Designed By: WRM  
Drawn By: WRM  
File Name: W81255A-SUB-V-30-DGN  
Date: MAR 2022

INTRACOASTAL WATERWAY  
JACKSONVILLE TO MIAMI, FLORIDA  
VOLUSIA COUNTY  
**HYDROGRAPHIC EXAM SURVEY FY21  
12-FOOT PROJECT**  
PLAN  
STA. 17+00 CUT V-29 THRU STA. 12+00 CUT V-31



10 9 8 7 6 5 4 3 2 1

F

E

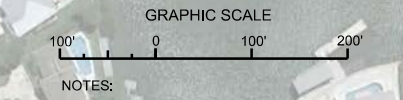
D

C

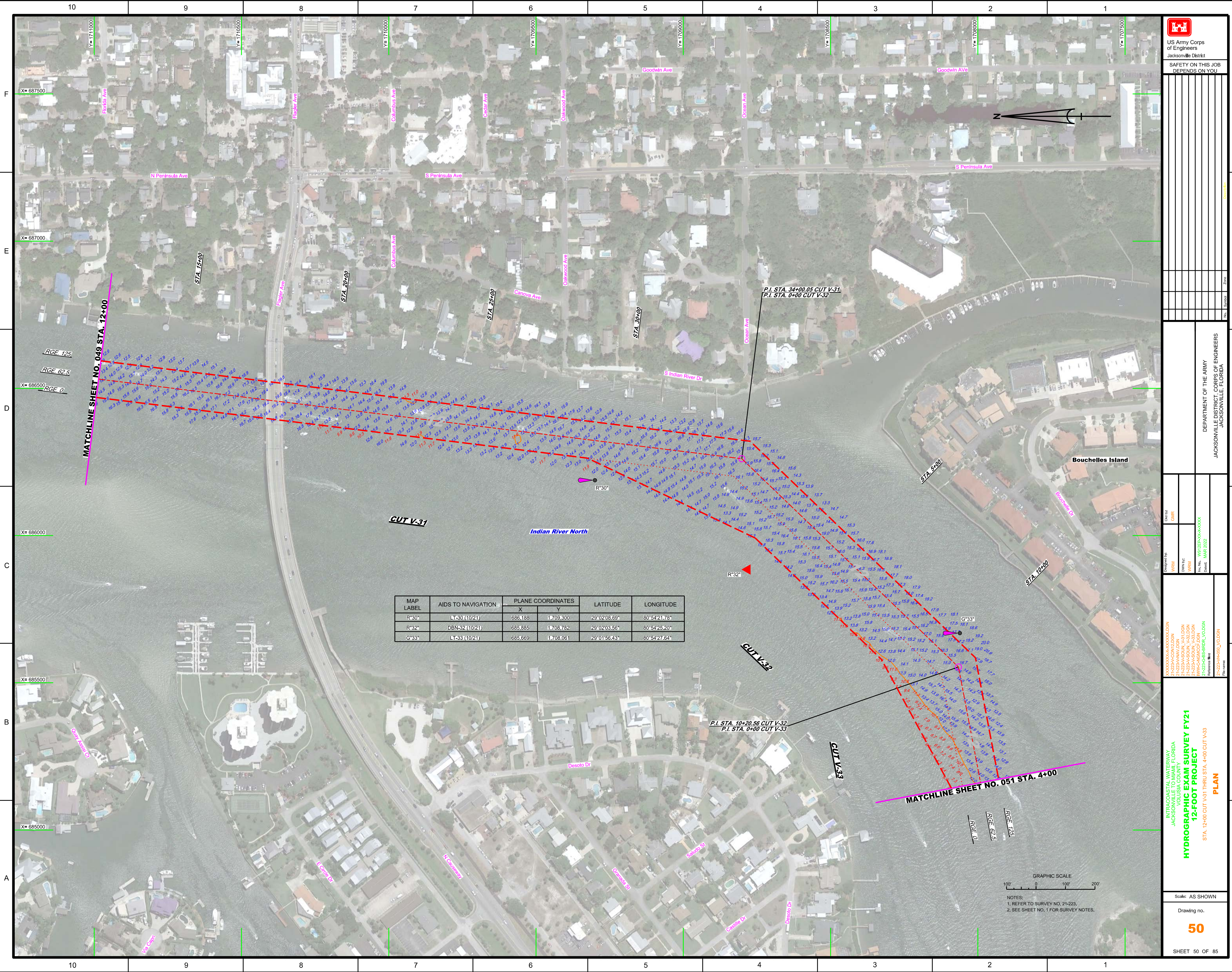
B

A


MAP LABEL	AIDS TO NAVIGATION	PLANE COORDINATES		LATITUDE	LONGITUDE
		X	Y		
R*24	DBN-24 (10/21)	688227	17714.026	29°02'55.43"	80°54'21.30"
G*29	LT-29 (10/21)	688735	17712.324	29°02'38.62"	80°54'15.58"



NOTES:  
1. REFER TO SURVEY NO. 21-223.  
2. SEE SHEET NO. 1 FOR SURVEY NOTES.



MAP LABEL	AIDS TO NAVIGATION	PLANE COORDINATES		LATITUDE	LONGITUDE
		X	Y		
R <sup>30</sup>	LT-30 (10/21)	686,188	1,709,300	29°02'08.69"	80°54'21.76"
R <sup>32</sup>	DBN-32 (10/21)	685,885	1,708,782	29°02'03.56"	80°54'25.20"
G <sup>33</sup>	LT-33 (10/21)	685,669	1,708,061	29°01'56.43"	80°54'27.64"



US Army Corps of Engineers  
Jacksonville District

SAFETY ON THIS JOB  
DEPENDS ON YOU

---

DEPARTMENT OF THE ARMY  
JACKSONVILLE DISTRICT, CORPS OF ENGINEERS  
JACKSONVILLE, FLORIDA

---

Drawn by: GHR  
Checked by: WRM  
Designed by: WRM  
Scale: AS SHOWN

File No.: W81255-00-00-000  
Contract: MAR 2022

---

INTRACOASTAL WATERWAY  
JACKSONVILLE TO MIAMI, FLORIDA  
VOLUSIA COUNTY  
**HYDROGRAPHIC EXAM SURVEY FY21**  
**12-FOOT PROJECT**  
STA. 12+00 CUT V-31 THRU STA. 4+00 CUT V-33

**PLAN**

---

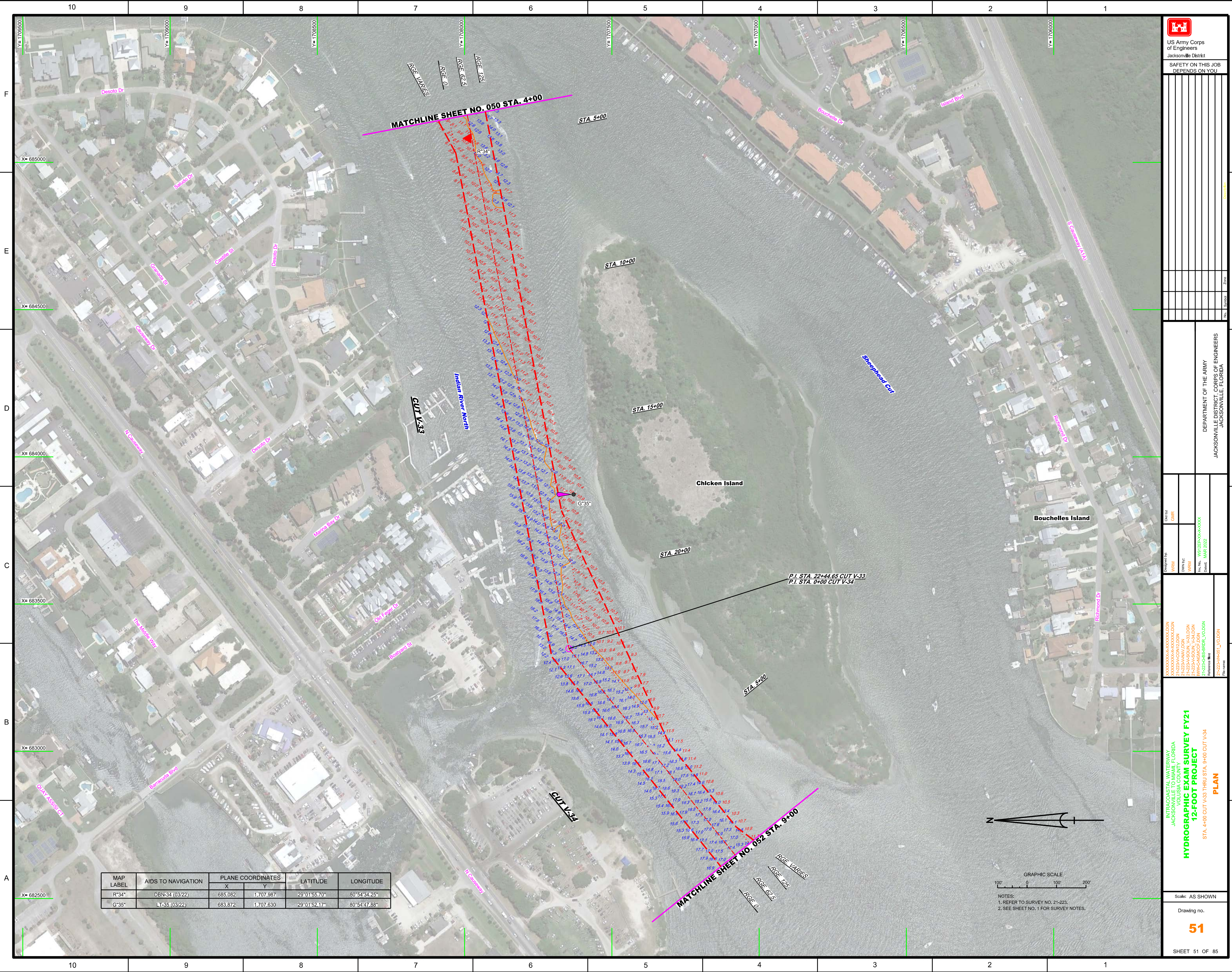
Scale: AS SHOWN

Drawing no.  
**50**

SHEET 50 OF 85




NOTES:  
1. REFER TO SURVEY NO. 21-223.  
2. SEE SHEET NO. 1 FOR SURVEY NOTES.



MAP LABEL	AIDS TO NAVIGATION	PLANE COORDINATES		LATITUDE	LONGITUDE
		X	Y		
R°34°	DBN-34 (03/22)	685,082	1,707,987	29°01'55.70"	80°54'34.25"
G°35°	LT-35 (03/22)	683,872	1,707,630	29°01'52.17"	80°54'47.86"



NOTES:  
 1. REFER TO SURVEY NO. 21-223.  
 2. SEE SHEET NO. 1 FOR SURVEY NOTES.



US Army Corps of Engineers  
Jacksonville District

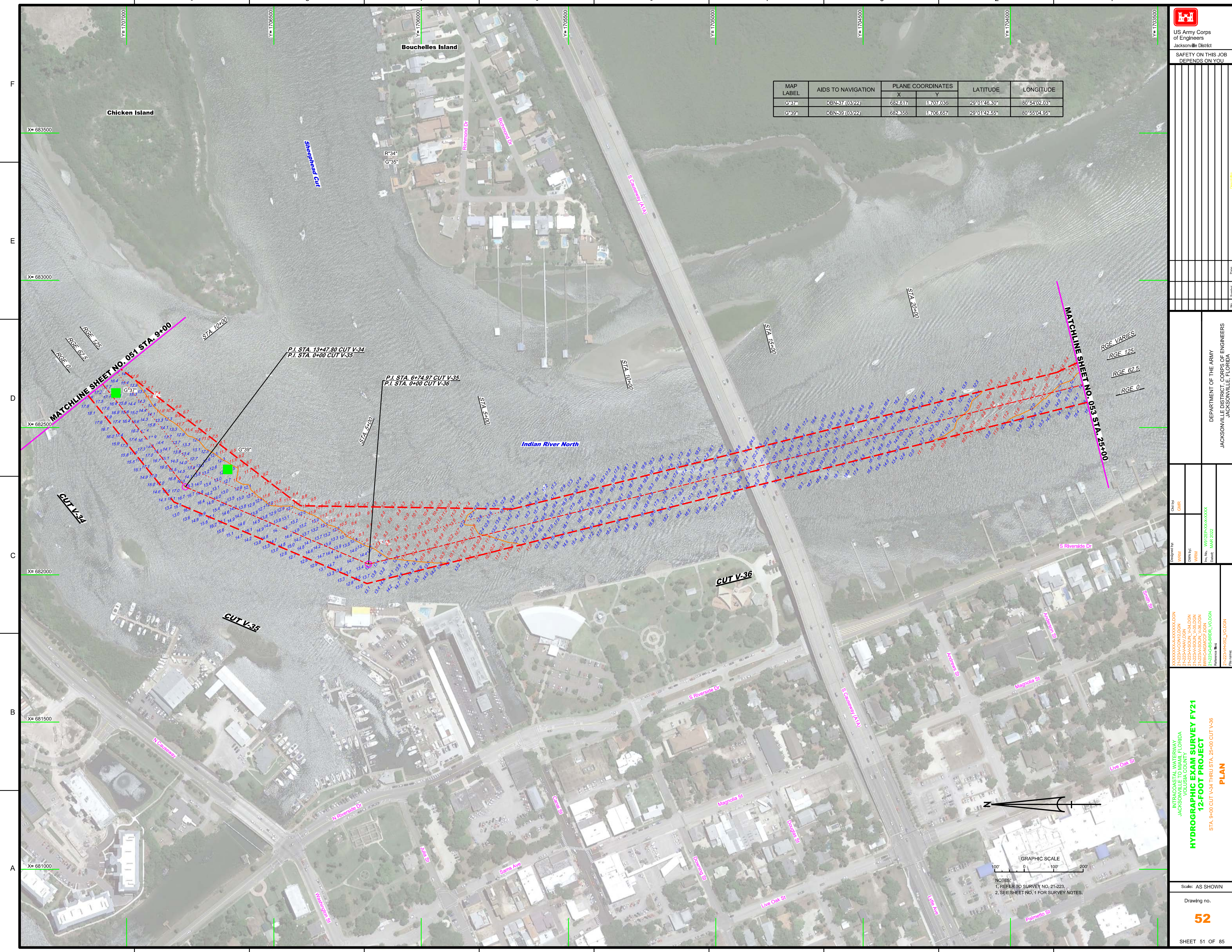
SAFETY ON THIS JOB  
DEPENDS ON YOU


INTRACOASTAL WATERWAY  
 JACKSONVILLE TO MIAMI, FLORIDA  
 VOLUSIA COUNTY  
**HYDROGRAPHIC EXAM SURVEY FY21**  
**12-FOOT PROJECT**  
 STA. 4+00 CUT V-33 THRU STA. 9+00 CUT V-34  
**PLAN**

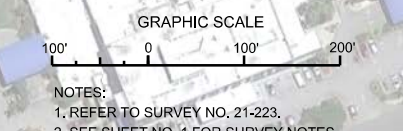
Scale: AS SHOWN

Drawing no.  
**51**

SHEET 51 OF 85



MAP LABEL	AIDS TO NAVIGATION	PLANE COORDINATES		LATITUDE	LONGITUDE
		X	Y		
G-37*	DBN-37 (03/22)	682,617	17,07,036	29°01'46.30"	80°54'02.03"
G-39*	DBN-39 (03/22)	682,358	17,06,657	29°01'42.55"	80°55'04.95"





US Army Corps of Engineers  
Jacksonville District

SAFETY ON THIS JOB  
DEPENDS ON YOU

MAP LABEL	AIDS TO NAVIGATION	PLANE COORDINATES		LATITUDE	LONGITUDE
		X	Y		
R-34"	LT BUOY-43 (03/22)	682,835	1708,401	29°01'10.81"	80°54'59.60"
G-45"	LT-5 (03/22)	684,029	1701,691	29°00'53.87"	80°54'46.17"
R-46"	DBN-66 (03/22)	683,856	1701,620	29°00'52.67"	80°54'48.11"

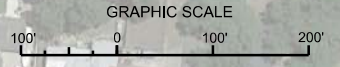


DEPARTMENT OF THE ARMY  
JACKSONVILLE DISTRICT, CORPS OF ENGINEERS  
JACKSONVILLE, FLORIDA

Checked By: GHR  
Designed By: WRM  
Drawn By: WRM  
File No: W12325A-000-V-01-001  
Date: MAR 2022

XXXXXXXXXXXXXXXXXXXX.DGN  
F:\22325A\000\_V-01.DGN  
F:\22325A\000\_V-01.DGN  
F:\22325A\000\_V-01.DGN  
F:\22325A\000\_V-01.DGN  
F:\22325A\000\_V-01.DGN  
F:\22325A\000\_V-01.DGN  
F:\22325A\000\_V-01.DGN  
F:\22325A\000\_V-01.DGN  
F:\22325A\000\_V-01.DGN

INTRACOASTAL WATERWAY  
JACKSONVILLE TO MIAMI, FLORIDA  
VOLUSIA COUNTY  
**12-FOOT PROJECT**  
STA. 25+00 CUT V-36 THRU STA. 10+00 CUT V-38  
**PLAN**



NOTES:  
1. REFER TO SURVEY NO. 21-223.  
2. SEE SHEET NO. 1 FOR SURVEY NOTES.

Scale: AS SHOWN  
Drawing no.  
**53**  
SHEET 53 OF 85





MAP LABEL	AIDS TO NAVIGATION	PLANE COORDINATES		LATITUDE	LONGITUDE
		X	Y		
R*48*	DBN-48 (03/22)	686101	11696712	29°00'04.06"	80°54'22.87"
G*49*	LT-49 (03/22)	686268	11696838	29°00'05.31"	80°54'20.98"

US Army Corps of Engineers  
Jacksonville District  
SAFETY ON THIS JOB  
DEPENDS ON YOU

DEPARTMENT OF THE ARMY  
JACKSONVILLE DISTRICT, CORPS OF ENGINEERS  
JACKSONVILLE, FLORIDA

---

Drawn by: WRM  
Checked by: GHR  
Design Date: MAR 2022

XXXXXXXXXXXXXXXXXXXX  
XXXXXXXXXXXXXXXXXXXX  
XXXXXXXXXXXXXXXXXXXX  
21-223A-VOL-01.DGN  
21-223A-VOL-02.DGN  
21-223A-VOL-03.DGN  
21-223A-VOL-04.DGN  
21-223A-VOL-05.DGN  
21-223A-VOL-06.DGN  
21-223A-VOL-07.DGN  
21-223A-VOL-08.DGN  
21-223A-VOL-09.DGN  
21-223A-VOL-10.DGN  
21-223A-VOL-11.DGN  
21-223A-VOL-12.DGN  
21-223A-VOL-13.DGN  
21-223A-VOL-14.DGN  
21-223A-VOL-15.DGN  
21-223A-VOL-16.DGN  
21-223A-VOL-17.DGN  
21-223A-VOL-18.DGN  
21-223A-VOL-19.DGN  
21-223A-VOL-20.DGN  
21-223A-VOL-21.DGN  
21-223A-VOL-22.DGN  
21-223A-VOL-23.DGN  
21-223A-VOL-24.DGN  
21-223A-VOL-25.DGN  
21-223A-VOL-26.DGN  
21-223A-VOL-27.DGN  
21-223A-VOL-28.DGN  
21-223A-VOL-29.DGN  
21-223A-VOL-30.DGN  
21-223A-VOL-31.DGN  
21-223A-VOL-32.DGN  
21-223A-VOL-33.DGN  
21-223A-VOL-34.DGN  
21-223A-VOL-35.DGN  
21-223A-VOL-36.DGN  
21-223A-VOL-37.DGN  
21-223A-VOL-38.DGN  
21-223A-VOL-39.DGN  
21-223A-VOL-40.DGN  
21-223A-VOL-41.DGN  
21-223A-VOL-42.DGN  
21-223A-VOL-43.DGN  
21-223A-VOL-44.DGN  
21-223A-VOL-45.DGN  
21-223A-VOL-46.DGN  
21-223A-VOL-47.DGN  
21-223A-VOL-48.DGN  
21-223A-VOL-49.DGN  
21-223A-VOL-50.DGN

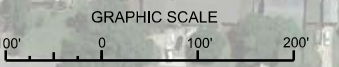
---

**INTRACOASTAL WATERWAY**  
JACKSONVILLE TO MIAMI, FLORIDA  
VOLusia COUNTY  
**HYDROGRAPHIC EXAM SURVEY FY21**  
**12-FOOT PROJECT**  
STA. 43+00 THRU STA. 76+00 CUT V-38  
**PLAN**

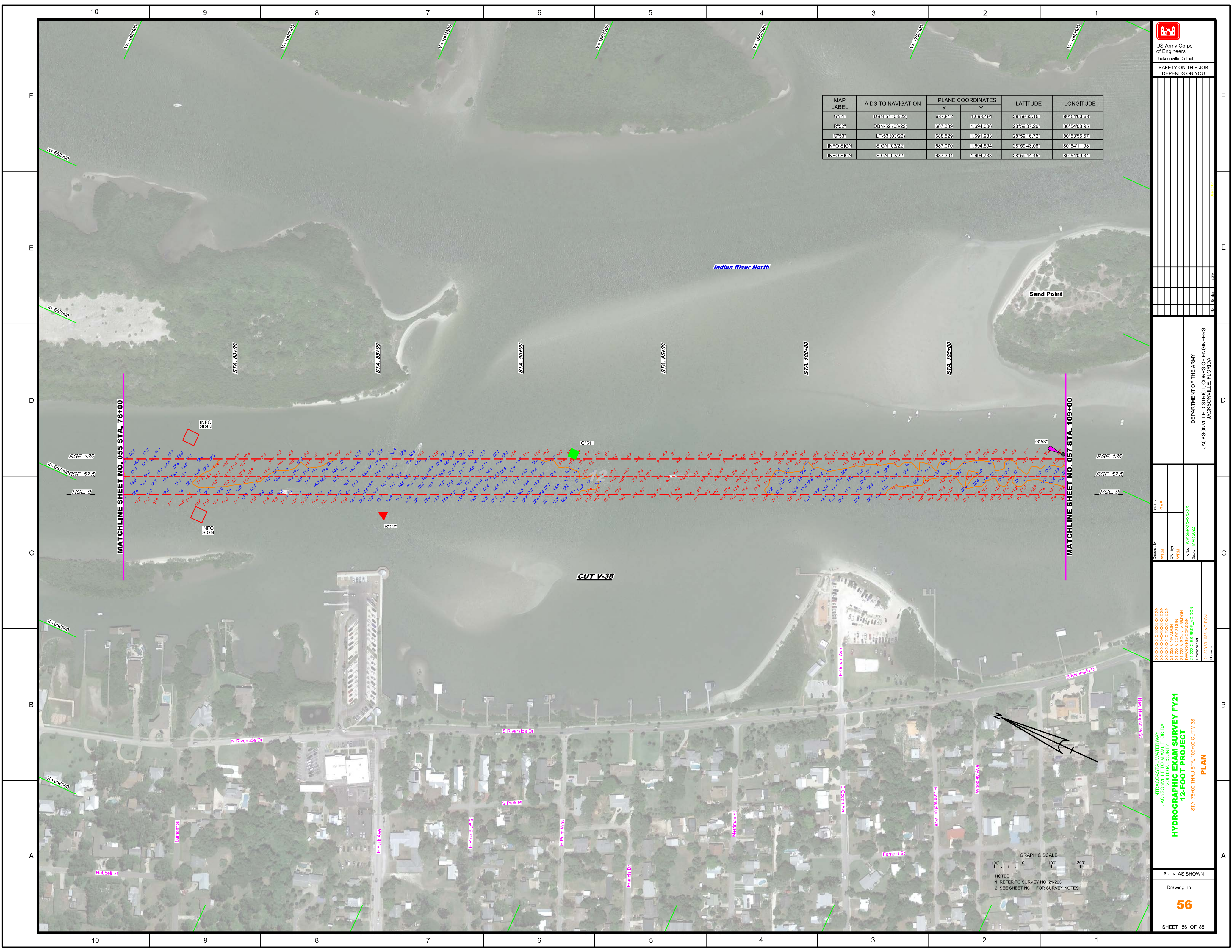
---

Scale: AS SHOWN  
Drawing no.  
**55**

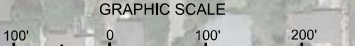
SHEET 55 OF 85



NOTES:  
1. REFER TO SURVEY NO. 21-223.  
2. SEE SHEET NO. 1 FOR SURVEY NOTES.

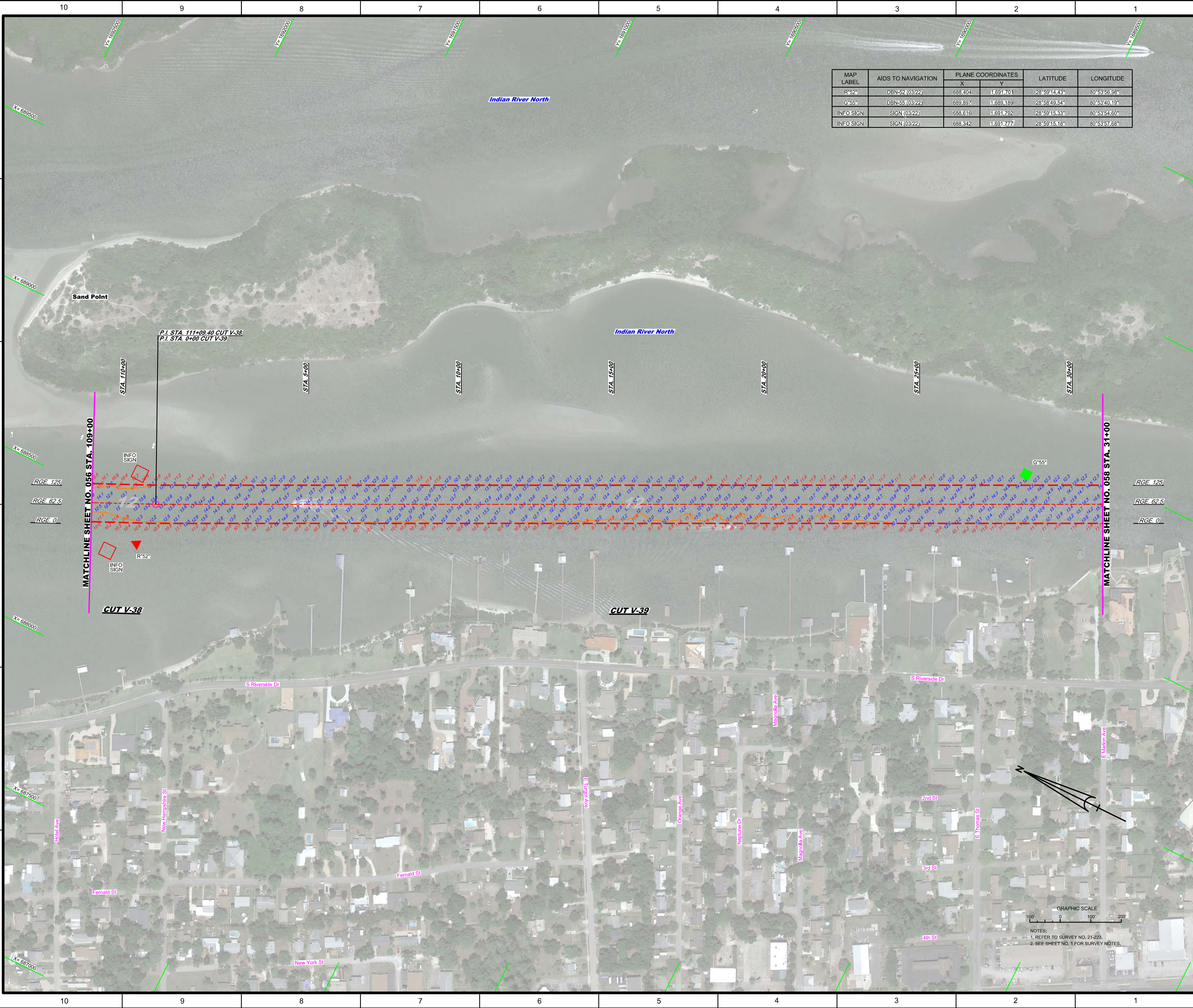


MAP LABEL	AIDS TO NAVIGATION	PLANE COORDINATES		LATITUDE	LONGITUDE
		X	Y		
G*51*	DBN*51(03/22)	687.812	1.693.491	28°59'32.15"	80°54'03.63"
R*52*	DBN*52(03/22)	687.839	1.694.006	28°59'37.26"	80°54'06.95"
G*53*	LN*53(03/22)	688.529	1.691.933	28°59'16.72"	80°53'55.57"
INFO SIGN	SIGN(03/22)	687.070	1.694.594	28°59'43.08"	80°54'11.98"
INFO SIGN	SIGN(03/22)	687.804	1.694.733	28°59'44.45"	80°54'09.34"



NOTES:  
1. REFER TO SURVEY NO. 21-223.  
2. SEE SHEET NO. 1 FOR SURVEY NOTES.





MAP LABEL	AIDS TO NAVIGATION	PLANE COORDINATES		LATITUDE	LONGITUDE
		X	Y		
R*52*	DBN-52 (03/22)	688,404	1,691,701	28°59'14.43"	80°53'56.98"
G*55*	DBN-55 (03/22)	689,897	1,689,189	28°58'49.54"	80°53'40.19"
INFO SIGN	SIGN (03/22)	688,616	1,691,792	28°59'15.33"	80°53'54.60"
INFO SIGN	SIGN (03/22)	688,342	1,691,777	28°59'15.18"	80°53'57.68"

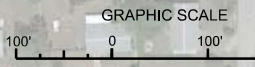
  
 US Army Corps of Engineers  
 Jacksonville District  
 SAFETY ON THIS JOB DEPENDS ON YOU

DEPARTMENT OF THE ARMY  
 JACKSONVILLE DISTRICT, CORPS OF ENGINEERS  
 JACKSONVILLE, FLORIDA

Checked By: GHR  
 Designed By: WRM  
 Drawn By: WRM  
 File No.: W1223A-VOL-DGN  
 Date: MAR 2022

INTRACOASTAL WATERWAY  
 JACKSONVILLE TO MIAMI, FLORIDA  
 VOLUSIA COUNTY  
**HYDROGRAPHIC EXAM SURVEY FY21**  
**12-FOOT PROJECT**  
 STA. 109+00 CUT V-38 THRU STA. 31+00 CUT V-39  
**PLAN**

Scale: AS SHOWN  
 Drawing no. **57**  
 SHEET 57 OF 85



NOTES:  
 1. REFER TO SURVEY NO. 21-223.  
 2. SEE SHEET NO. 1 FOR SURVEY NOTES.

10 9 8 7 6 5 4 3 2 1



US Army Corps of Engineers  
Jacksonville District

SAFETY ON THIS JOB  
DEPENDS ON YOU

MAP LABEL	AIDS TO NAVIGATION	PLANE COORDINATES		LATITUDE	LONGITUDE
		X	Y		
R*56	DBN-56 (03/22)	691260	1,686,042	28°58'18.38"	80°53'24.88"
G*57	LT-57 (03/22)	691,471	1,686,013	28°58'18.09"	80°53'22.51"



Zone	Scale	No.	Symbol

DEPARTMENT OF THE ARMY  
JACKSONVILLE DISTRICT, CORPS OF ENGINEERS  
JACKSONVILLE, FLORIDA

Checked by: GHR  
Designed by: WRM  
Drawn by: WRM  
File No.: 21-223-H056-V39-000  
Date: MAR 2022

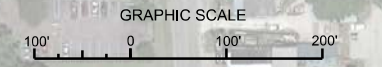
XXXXXXXXXXXXXXXXXXXX.DGN  
XXXXXXXXXXXXXXXXXXXX.DGN  
XXXXXXXXXXXXXXXXXXXX.DGN  
21-223-H056-V39-000.DGN  
21-223-H056-V39-000.DGN  
21-223-H056-V39-000.DGN

INTRACOASTAL WATERWAY  
JACKSONVILLE TO MIAMI, FLORIDA  
VOLUSIA COUNTY  
HYDROGRAPHIC EXAM SURVEY FY21  
12-FOOT PROJECT  
STA. 31+00 THRU STA. 64+00 CUT V-39  
**PLAN**

Scale: AS SHOWN  
Drawing no.  
**58**  
SHEET 58 OF 85

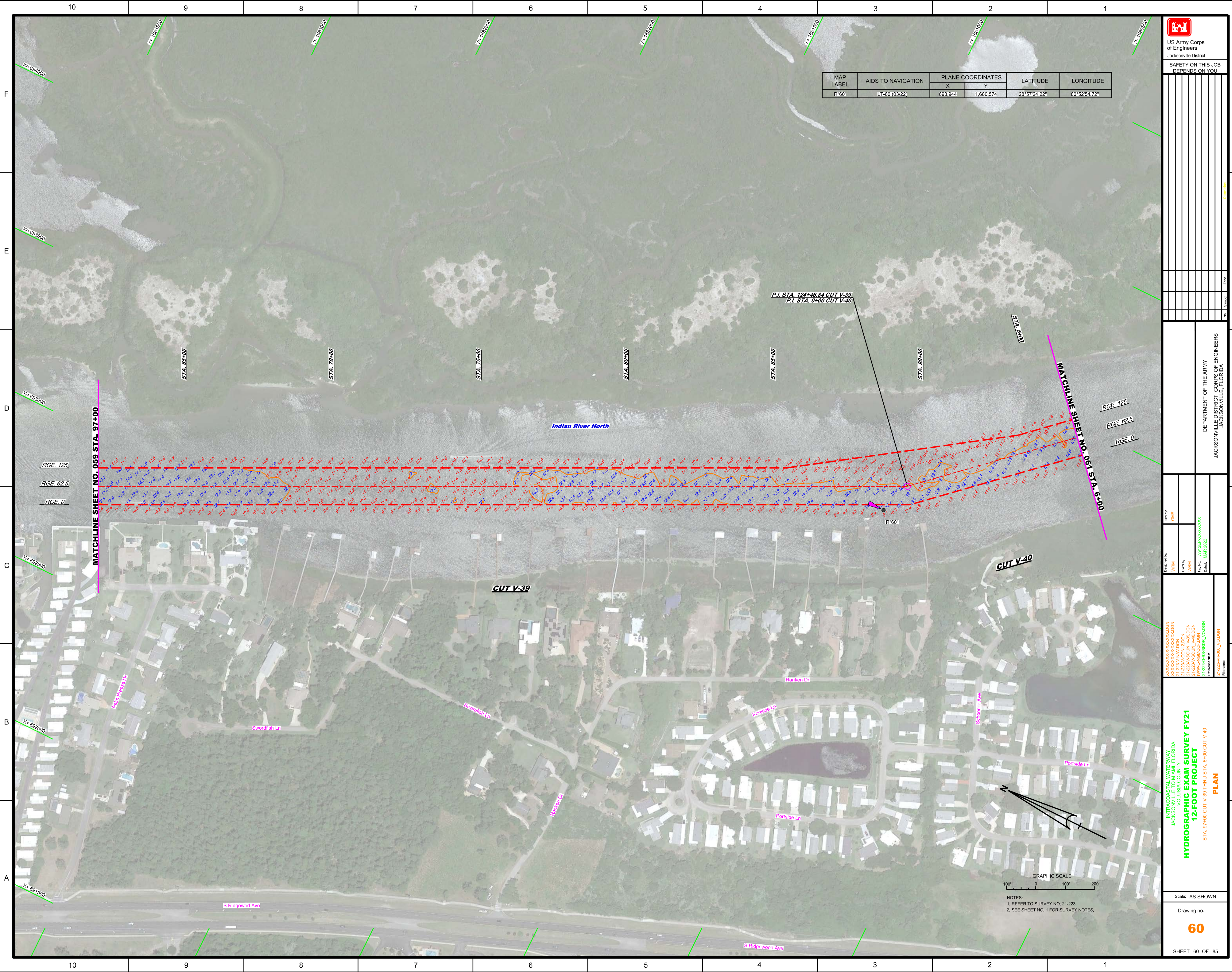
F  
E  
D  
C  
B  
A

10 9 8 7 6 5 4 3 2 1



NOTES:  
1. REFER TO SURVEY NO. 21-223.  
2. SEE SHEET NO. 1 FOR SURVEY NOTES.





MAP LABEL	AIDS TO NAVIGATION	PLANE COORDINATES		LATITUDE	LONGITUDE
		X	Y		
R <sup>60</sup>	LT-50 (0322)	693,844	1,680,574	28°57'24.22"	80°52'54.72"

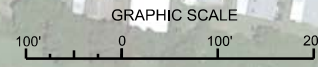
 US Army Corps of Engineers Jacksonville District	
SAFETY ON THIS JOB DEPENDS ON YOU	

DEPARTMENT OF THE ARMY  
 JACKSONVILLE DISTRICT, CORPS OF ENGINEERS  
 JACKSONVILLE, FLORIDA

Checked By: GHR  
 Designed By: WRM  
 Drawn By: WRM  
 File No.: M01255A-V01-DGN  
 Date: MAR 2022  
 Reference File: 21-223A-1480L\_V01.DGN  
 File Name: 21-223A-1480L\_V01.DGN

INTRACOASTAL WATERWAY  
 JACKSONVILLE TO MIAMI, FLORIDA  
 VOLusia COUNTY  
**HYDROGRAPHIC EXAM SURVEY FY21**  
**12-FOOT PROJECT**  
 STA. 97+00 CUT V-39 THRU STA. 6+00 CUT V-40  
**PLAN**

Scale: AS SHOWN  
 Drawing no. **60**  
 SHEET 60 OF 85



NOTES:  
 1. REFER TO SURVEY NO. 21-223.  
 2. SEE SHEET NO. 1 FOR SURVEY NOTES.